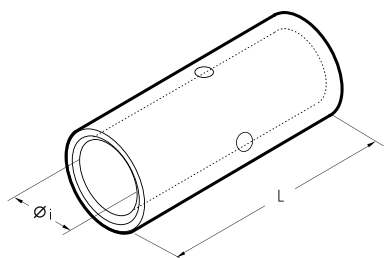


THROUGH CONNECTORS TYPE L-M for copper conductors



Sections and Dimensions:



Conductor Size sqmm		Ref.	Dimensions mm	
low stranded	Flexible		Øi	L
0,25÷1,5	0,25÷1,5	L 03-M	1,8	15
1,5÷2,5	1,5÷2,5	L 06-M	2,4	15
4÷6	4÷6	L 1-M	3,6	22
10	10	L 2-M	4,6	25
16	16	L 3-M	5,8	27
25	25	L 5-M	7,0	29
35	25÷35	L 7-M	8,9	33
50	35÷50	L 10-M	10,0	37
70	50÷70	L 14-M	11,3	39
95	70÷95	L 19-M	13,5	43
120	95÷120	L 24-M	15,2	47
150	120÷150	L 30-M	16,7	58
185	150÷185	L 37-M	19,2	64
240	185÷240	L 48-M	21,1	75
300	240÷300	L 60-M	23,7	90
400	300÷400	L 80-M	27,0	94
500	400÷500	L 100-M	30,3	98
630	500÷630	L 120-M	33,4	105
800	600	L 160-M	38,0	112
1000	800	L 200-M	44,0	120

Description:

- L-M range of connectors are designed for jointing low voltage conductors.
- Are manufactured from electrolytic copper tube Cu-OF CW008A conform to UNI EN I 3600:2003.
- Are electrolytically tin plated with a minimum thickness of 3µm to avoid oxidation.
- Cembre connectors are annealed to guarantee optimum ductility which is an absolute necessity for connectors which will have to withstand the severe deformation arising when compressed and any bending of the palm during installation.
- They feature an internal taper at both ends to ease the introduction of the conductor and a central stop to ensure correct positioning.

Markings:



- Conform to products norm IEC 61238-1
- BT Directive EEC 73/23 (modified by EEC 93/68)



- According to UL 486A standard (file EI25401)

Cembre SpA

Via Serenissima, 9 - 25135 Brescia (Italy)
 Tel.: +39 030 36921 - Telefax: +39 030 3365766
 www.cembre.com - E-mail: info@cembre.com