

AA-M MONOMETALLIC ALUMINIUM TERMINALS for aluminium cables


Description:

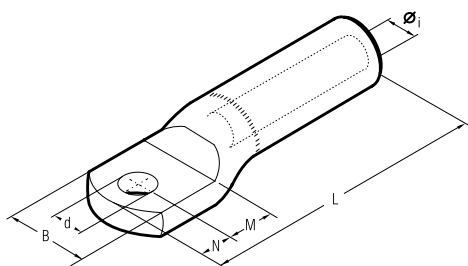
- AA-M series terminals are made from aluminium tube of a purity equal or greater than 99,5%. The cross sectional area of the annulus and the length of the barrel are designed to assure an extremely reliable electrical connection.
- The internal surface is duly protected against the oxidation through a specific grease with a very high dropping point.
- They are studied for connecting aluminium cable of low and medium voltage.

Features of the material:

- DESIGNATION : Al 99.50
- STANDARD OF REFERENCE : DIN 1712/1976 Teil 3
- ELECTRICAL RESISTANCE AT 20°C ($\mu \Omega \cdot \text{cm}$) : 2.874
- MECHANICAL FEATURES:
 - BREAKING RESISTANCE (N/mm²) : 85 ÷ 129
 - STRETCHING AT 5 % : 10 ÷ 23

Marks:


- According the directive 2006/95/CE

Sections and dimensions:


Conductor Size sqmm	Ø Stud mm	Ref.	Dimensions mm					
			Øi	B	M	N	L	d
16	8	AA 16-M 8	5,5	21	13	11	77,0	8,4
25	8	AA 25-M 8	6,5	21	13	11	77,0	8,4
35	8	AA 35-M 8	8,0	23	13	11	77,5	8,4
	10	AA 35-M 10	8,0	23	13	11	77,5	10,5
50	12	AA 50-M 12	9,0	26	16	14	91,0	13,2
	14	AA 50-M 14	9,0	26	18	16	95,0	15,0
70	12	AA 70-M 12	11,0	27	16	14	91,0	13,2
	14	AA 70-M 14	11,0	27	18	16	95,0	15,0
95	12	AA 95-M 12	12,5	27	16	14	91,0	13,2
	14	AA 95-M 14	12,5	27	18	16	95,0	15,0
120	12	AA 120-M 12	13,7	35	16	14	115,0	13,2
	14	AA 120-M 14	13,7	35	18	16	119,0	15,0
150	12	AA 150-M 12	15,5	34	16	14	115,0	13,2
	14	AA 150-M 14	15,5	34	18	16	119,0	15,0
185	12	AA 185-M 12	17,0	42	20	14	122,0	13,2
	14	AA 185-M 14	17,0	42	22	16	126,0	15,0
240	12	AA 240-M 12	19,5	44	20	14	122,0	13,2
	14	AA 240-M 14	19,5	44	22	16	126,0	15,0
300	12	AA 300-34 M 12	22,5	47	22	14	130,0	13,2
	14	AA 300-34 M 14	22,5	47	22	16	132,0	15,0
	16	AA 300-34 M 16	22,5	47	22	17	133,0	17,0
	16	AA 300-M 16	23,3	54	19	17	172,0	17,0
400	16	AA 400-M 16	26,0	56	19	17	172,0	17,0
500	16	AA 500-40 M 16	29,1	57	22	19	177,0	17,0
630	16	AA 630-M 16	32,5	70	22	19	177,0	17,0

Cembre SpA

Via Serenissima, 9 - 25135 Brescia (Italy)

Tel.: +39 030 36921 - Fax: +39 030 3365766

 Web: www.cembre.com - Email: info@cembre.com