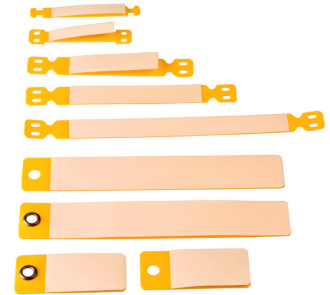


## LAMINAT MARKING SYSTEM

A highly versatile system for creating professional, outdoor grade labels for cables, wires, panels, instruments, machines and equipment. You can use any non-paper adhesive label – printed by portable printer, laser or thermal in conjunction with a Laminat carrier to make a great looking quality ident.



## CABLE MARKERS Tie-On Cable Markers

SEAL-UP AREA LxH	MARKERS/PACK	P/N
45x9	100	350025
55x15	100	350186
80x15	100	350216
130x15	50	350278

## How the Laminat system works



Lift clear seal  
Produce your label



Stick label onto  
Laminat carrier



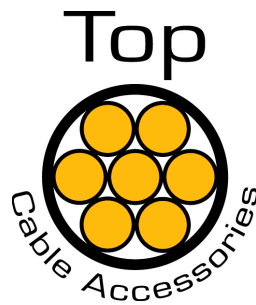
Cover with clear  
Laminat seal



Tie on to cable with  
TEXIT cable ties

T 01453 765666 F 01453 755522

Info@topcableaccessories.co.uk www.topcableaccessories.co.uk  
Top Cable Accessories Ltd Unit F2C, Bath Road Trading Estate, Stroud, Glos GL5 3QF



### INSTRUMENT OR VALVE TAGS

Tie on tag, with\* or without steel ring reinforcement, attached by cable ties or wire

SEAL-UP AREA LxH	MARKERS/PACK	P/N
43x25	50	350414
43x25*	50	350407
135x25	50	350452
135x25*	50	350445



### PANEL AND EQUIPMENT MARKER

Self-adhesive clear carrier to enhance and protect adhesive label.

SEAL-UP AREA LxH	MARKERS/PACK	P/N
60x15	80	322879
66x40	40	322886
100x66	50	322848



### LAMINAT KIT

A portable marking system in a handy carry case. Everything you need to produce weather resistant, self-adhesive equipment labels and halogen-free tie-on cable markers any time, any place.

The kit contains:

- High spec label printer + manual + batteries
- Four self-adhesive industrial label tapes
- 100 Laminat tie-on labels 55x15mm
- 100 Laminat tie-on labels 45x9mm
- 80 Laminat self-adhesive panel markers 60x15mm
- 100 Weather resistant nylon cable ties



T 01453 765666 F 01453 755522

Info@topcableaccessories.co.uk www.topcableaccessories.co.uk

Top Cable Accessories Ltd Unit F2C, Bath Road Trading Estate, Stroud, Glos GL5 3QF